



Available Industrial Site

Connector Plus 1

475 Acres

Location

LOCATION: I-185/ Old Piedmont Hwy/ Old Cleveland Rd
COMMUNITY: Greenville
COUNTY: Greenville

Description

MINIMUM ACRES: 75 Acres
MAXIMUM ACRES: 475 Acres
SUBDIVIDE: Yes Acres
CURRENT USE: Vacant / Timber
SURROUNDING AREA: Agricultural, Commercial
TOPOGRAPHY:



Taxes and Zoning

ZONED INDUSTRIAL: Yes
RESTRICTIONS: I-1, Industrial
TAXMAP: 608.3-1-15
TAX DISTRICT: 91
MILLAGE RATE: 280.30 (2005)
FOREIGN TRADE ZONE: No
FIRE DISTRICT: Piedmont
FIRE RATING: 3

Transportation and Access

INTERSTATE: I-85 2 Miles
ALT. HIGHWAY: SC 20 0.1 Miles
PRIMARY AIRPORT: GSP International Airport 17 Miles
CIVIL AIRPORT: Donaldson Center 4 Miles
PORT: Charleston 212 Miles
RAIL: CSX

Utilities

WATER: Greenville Water System 20"
 Line at E boundary of site
GAS: Piedmont Natural Gas 6"
 Along SC 20
SEWER: WCRSA/Georges Creek 10"
ELECTRICITY: Duke Power

Sales

MIN. PRICE ACRE: \$35,000
MAX. PRICE PER ACRE:
LEASE:
SOURCE: George Zimmerman
 Coldwell Banker / Caine Commercial
 864-250-2800

Comments

Located at the I-185 (Southern Connector) and SC Highway 20 Interchange. Rail served.

For Additional Information Contact:

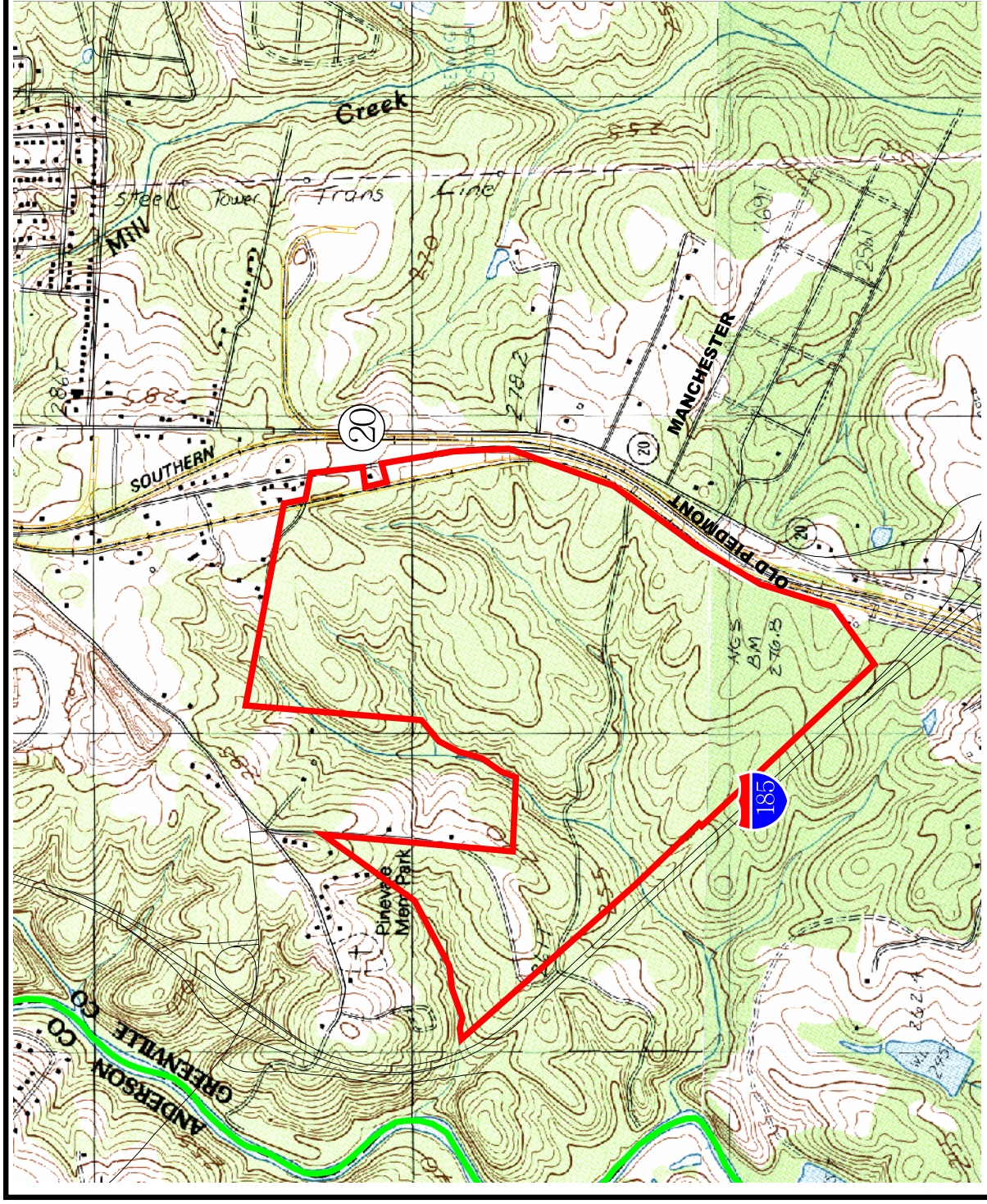
Jerry Howard
 Greenville Area Development Corporation
 233 North Main, Suite 250
 Greenville SC 29601

Phone: 864-235-2008
 Fax: 864-235-9030
 E-Mail: jhoward@greenvillecounty.org



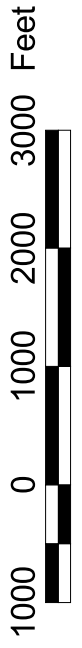
No warranty or representation, expressed or implied, is made regarding the accuracy of this data, and same is subject to omissions, errors, and changes. This report is in accordance with the terms and agreements of the InfoMentum License Agreement. This information was compiled by the SC Dept. of Commerce, the SC Appalachian Council of Governments and the Greenville Area Development Corporation

Topographic Map: Connector Plus 1



- Highway
- Street Centerline
- Railroad
- Visible
- Hidden
- County Boundary

Contour Interval
(3 Meters)



This map is a product of the Greenville Area Development Corporation. The GADC expressly disclaims any responsibility or liability with regard to the use of this map.